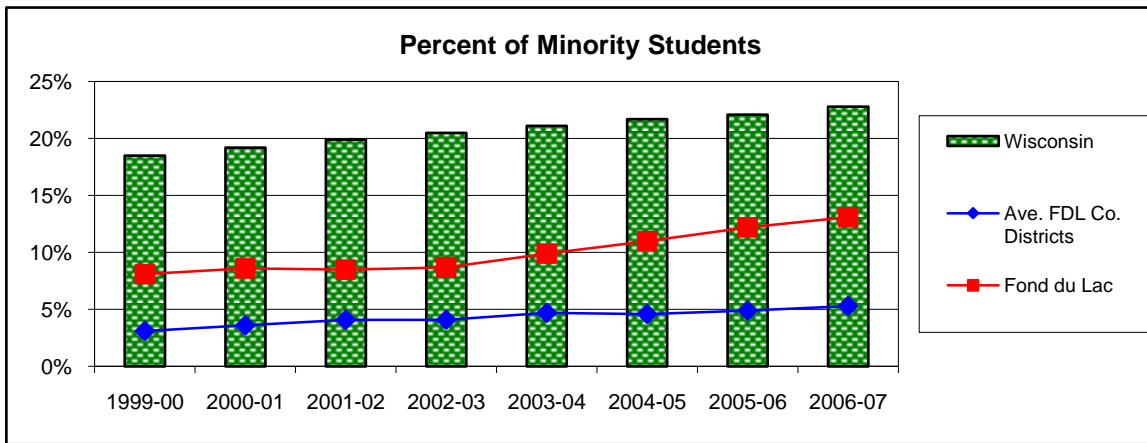


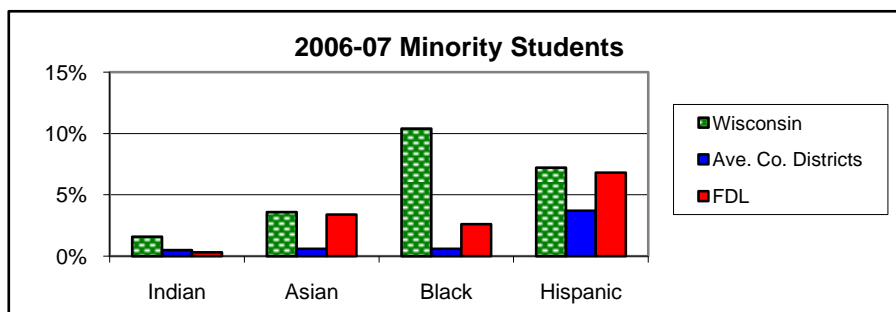
# 2007 Local Indicators for Excellence (L.I.F.E.) in Fond du Lac County UPDATED

## Indicator ED-10: Minority Students

Updated: 12/2007



% of Minority Students	1999-00	2000-01	2001-02	2002-03	2003-04	2004-05	2005-06	2006-07
Campbellsport	0.7%	1.6%	1.5%	1.7%	1.8%	2.0%	2.3%	2.8%
North FDL	2.3%	3.8%	5.7%	5.6%	6.6%	6.0%	7.9%	7.5%
Oakfield	6.9%	7.1%	7.2%	5.8%	6.7%	6.6%	5.7%	5.3%
Ripon	3.8%	4.3%	4.7%	4.8%	5.8%	5.9%	6.6%	7.4%
Rosendale-Brandon	2.0%	1.6%	2.2%	2.8%	2.8%	2.0%	2.1%	3.4%
Waupun	2.7%	3.3%	3.2%	3.7%	4.3%	4.8%	4.7%	5.6%
<b>Ave. of FDL Co. Dist.</b>	<b>3.1%</b>	<b>3.6%</b>	<b>4.1%</b>	<b>4.1%</b>	<b>4.7%</b>	<b>4.6%</b>	<b>4.9%</b>	<b>5.3%</b>
<b>Fond du Lac</b>	<b>8.1%</b>	<b>8.6%</b>	<b>8.5%</b>	<b>8.7%</b>	<b>9.9%</b>	<b>11.0%</b>	<b>12.2%</b>	<b>13.1%</b>
<b>Wisconsin</b>	<b>18.5%</b>	<b>19.2%</b>	<b>19.9%</b>	<b>20.5%</b>	<b>21.1%</b>	<b>21.7%</b>	<b>22.1%</b>	<b>22.8%</b>



2006-07	Amer.				
	Indian	Asian	Black	Hispanic	White
Campbellsport	0.4%	0.1%	0.7%	1.6%	97.2%
North FDL	0.6%	0.6%	0.7%	5.6%	92.4%
Oakfield	1.2%	0.9%	0.0%	3.2%	94.7%
Ripon	0.4%	0.6%	0.7%	5.7%	92.6%
Rosendale-Brandon	0.2%	0.4%	1.0%	1.8%	96.7%
Waupun	0.2%	0.9%	0.4%	4.1%	94.4%
<b>Ave. Co. Districts</b>	<b>0.5%</b>	<b>0.6%</b>	<b>0.6%</b>	<b>3.7%</b>	<b>94.7%</b>
<b>FDL</b>	<b>0.3%</b>	<b>3.4%</b>	<b>2.6%</b>	<b>6.8%</b>	<b>86.9%</b>
<b>Wisconsin</b>	<b>1.6%</b>	<b>3.6%</b>	<b>10.4%</b>	<b>7.2%</b>	<b>77.3%</b>

**Source:**

WI Dept. of Public Instruction. *Wisconsin's Information Network for Successful Schools (WINSS)* : Data Analysis : Student Demographics. <http://dpi.wi.gov/sig/index.html>



**ENROLLMENT BY RACE/ETHNICITY**

	<b>1999-00</b>	<b>2000-01</b>	<b>2001-02</b>	<b>2002-03</b>	<b>2003-04</b>	<b>2004-05</b>	<b>2005-06</b>	<b>2006-07</b>
<b>Campbellsport</b>								
Total Enrollment	1,562	1,495	1,561	1,527	1,534	1,484	1,467	1,468
% American Indian	0.1%	0.0%	0.1%	0.2%	0.1%	0.0%	0.0%	0.4%
% Asian	0.1%	0.2%	0.2%	0.1%	0.0%	0.1%	0.1%	0.1%
% Black	0.1%	0.3%	0.1%	0.3%	0.6%	0.6%	0.7%	0.7%
% Hispanic	0.4%	1.1%	1.1%	1.1%	1.1%	1.3%	1.5%	1.6%
% Minorities	0.7%	1.6%	1.5%	1.7%	1.8%	2.0%	2.3%	2.8%
% White	99.2%	98.4%	98.5%	98.2%	98.2%	98.0%	97.8%	97.2%
<b>North Fond du Lac</b>								
Total Enrollment	1,239	1,252	1,224	1,239	1,209	791	1,255	1,238
% American Indian	0.9%	0.5%	0.6%	0.6%	0.7%	0.6%	0.6%	0.6%
% Asian	0.2%	0.4%	0.7%	0.7%	0.9%	0.5%	1.1%	0.6%
% Black	0.5%	0.7%	1.4%	0.6%	0.6%	0.1%	0.6%	0.7%
% Hispanic	0.7%	2.2%	3.0%	3.7%	4.4%	4.8%	5.6%	5.6%
% Minorities	2.3%	3.8%	5.7%	5.6%	6.6%	6.0%	7.9%	7.5%
% White	97.7%	96.2%	94.4%	94.4%	93.4%	93.9%	92.0%	92.4%
<b>Oakfield</b>								
Total Enrollment	653	659	661	620	613	520	576	567
% American Indian	1.8%	1.2%	1.5%	1.3%	1.3%	1.2%	1.2%	1.2%
% Asian	0.6%	0.8%	1.1%	0.6%	0.5%	0.8%	0.5%	0.9%
% Black	0.2%	0.2%	0.2%	0.0%	0.0%	0.0%	0.2%	0.0%
% Hispanic	4.3%	4.9%	4.4%	3.9%	4.9%	4.6%	3.8%	3.2%
% Minorities	6.9%	7.1%	7.2%	5.8%	6.7%	6.6%	5.7%	5.3%
% White	93.1%	93.0%	92.9%	94.2%	93.3%	93.5%	94.3%	94.7%
<b>Ripon</b>								
Total Enrollment	1,619	1,669	1,687	1,712	1,694	1,745	1,763	1,820
% American Indian	0.2%	0.3%	0.3%	0.3%	0.4%	0.3%	0.3%	0.4%
% Asian	0.7%	0.6%	0.7%	0.7%	0.6%	0.5%	0.5%	0.6%
% Black	0.5%	0.5%	0.4%	0.4%	0.5%	0.5%	0.5%	0.7%
% Hispanic	2.4%	2.9%	3.3%	3.4%	4.3%	4.6%	5.3%	5.7%
% Minorities	3.8%	4.3%	4.7%	4.8%	5.8%	5.9%	6.6%	7.4%
% White	96.1%	95.7%	95.3%	95.2%	94.2%	94.0%	93.4%	92.6%
<b>Rosendale-Brandon</b>								
Total Enrollment	1,018	1,028	1,029	1,043	1,022	1,001	1,020	1,022
% American Indian	0.0%	0.0%	0.2%	0.4%	0.3%	0.3%	0.3%	0.2%
% Asian	1.4%	1.4%	1.4%	1.0%	0.7%	0.6%	0.5%	0.4%
% Black	0.4%	0.1%	0.2%	0.4%	0.5%	0.4%	0.5%	1.0%
% Hispanic	0.2%	0.1%	0.4%	1.0%	1.3%	0.7%	0.8%	1.8%
% Minorities	2.0%	1.6%	2.2%	2.8%	2.8%	2.0%	2.1%	3.4%
% White	98.0%	98.4%	97.9%	97.3%	97.3%	98.0%	97.9%	96.7%
<b>Waupun</b>								
Total Enrollment	2,404	2,389	2,367	2,320	2,284	2,233	2,184	2,134
% American Indian	0.1%	0.0%	0.0%	0.3%	0.2%	0.2%	0.3%	0.2%
% Asian	0.1%	0.4%	0.3%	0.2%	0.3%	0.9%	0.8%	0.9%
% Black	0.3%	0.6%	0.5%	0.6%	0.6%	0.3%	0.3%	0.4%
% Hispanic	2.2%	2.3%	2.4%	2.6%	3.2%	3.4%	3.3%	4.1%
% Minorities	2.7%	3.3%	3.2%	3.7%	4.3%	4.8%	4.7%	5.6%
% White	97.3%	96.7%	96.7%	96.3%	95.6%	95.2%	95.4%	94.4%
<b>Average of FDL County Districts</b>								
Total Enrollment	1,416	1,415	1,422	1,410	1,393	1,296	1,378	1,375
% American Indian	0.5%	0.3%	0.5%	0.5%	0.5%	0.4%	0.5%	0.5%
% Asian	0.5%	0.6%	0.7%	0.6%	0.5%	0.6%	0.6%	0.6%
% Black	0.3%	0.4%	0.5%	0.4%	0.5%	0.3%	0.5%	0.6%
% Hispanic	1.7%	2.3%	2.4%	2.6%	3.2%	3.2%	3.4%	3.7%
% Minorities	3.1%	3.6%	4.1%	4.1%	4.7%	4.6%	4.9%	5.3%
% White	96.9%	96.4%	96.0%	95.9%	95.3%	95.4%	95.1%	94.7%

**Fond du Lac**

Total Enrollment	7,305	7,241	7,228	7,245	7,278	7,269	7,589	7,522
% American Indian	0.5%	0.4%	0.5%	0.5%	0.5%	0.5%	0.4%	0.3%
% Asian	3.2%	3.4%	2.9%	2.8%	2.8%	3.0%	3.3%	3.4%
% Black	1.5%	1.6%	1.6%	1.5%	1.8%	2.1%	2.2%	2.6%
% Hispanic	2.9%	3.2%	3.5%	3.9%	4.8%	5.4%	6.3%	6.8%
% Minorities	8.1%	8.6%	8.5%	8.7%	9.9%	11.0%	12.2%	13.1%
% White	92.0%	91.4%	91.6%	91.2%	90.1%	88.9%	87.7%	86.9%

**Wisconsin**

Total Enrollment	877,348	877,379	877,535	879,225	878,217	863,495	874,098	875,543
% American Indian	1.4%	1.4%	1.4%	1.5%	1.4%	1.5%	1.4%	1.6%
% Asian	3.2%	3.3%	3.4%	3.3%	3.4%	3.5%	3.6%	3.6%
% Black	9.8%	10.0%	10.1%	10.3%	10.5%	10.4%	10.4%	10.4%
% Hispanic	4.1%	4.5%	5.0%	5.4%	5.8%	6.3%	6.7%	7.2%
% Minorities	18.5%	19.2%	19.9%	20.5%	21.1%	21.7%	22.1%	22.8%
% White	81.4%	80.8%	80.2%	79.5%	78.9%	78.4%	77.8%	77.3%