

## Embroidery Machine – Tracing the Design Perimeter

### Step 1: Prepare the project

- Start with the design loaded and ready to sew, and the proper hoop loaded and in place. For assistance with these steps, see the Technique Tutorials on “Embroidering a Design from the USB Drive”, and “Loading the Hoop.”



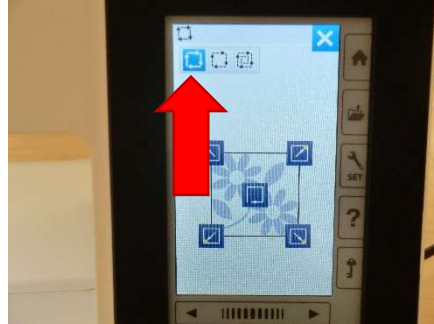
### Step 2: Tap the Pattern Tracing icon

- From the options on the right side of the screen, tap the Pattern Tracing icon.
- If you do not see the Pattern Tracing icon, use the arrows at the top and bottom of the icon list to scroll through the icons until you do.



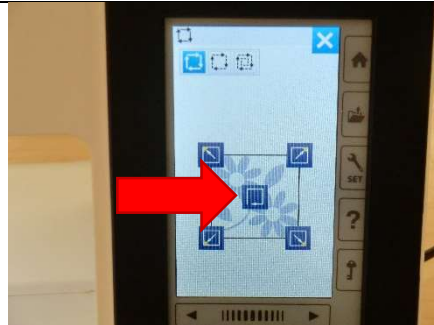
### Step 3: Select tracing rather than stitching

- At the top left of the screen, be sure icon with solid lines is selected. This option moves the needle around the design perimeter without sewing. The other two options are for basting



### Step 4: Trace the design

- Tap the Trace icon in the center of the screen. The hoop will move about to show the four edges of the design area



### Step 5: Return to the main screen

- When finished, tap the blue “X” icon to return to the “Ready to sew” screen.

