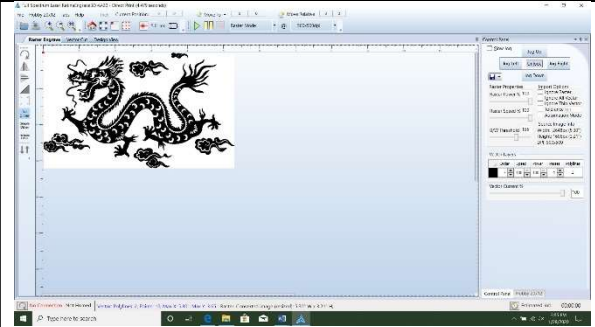


## Laser Cutter – Glass Etching

### Step 1: Create the file to be rastered and prepare it for rastering

- Follow the steps in the “Laster Cutter – Raster Engrave” Technique Tutorial to send a file to Retina Engrave and adjust image size, image dither, and speed and power settings.
- Some kinds of glass accept greater levels of detail than others, but in general a high-contrast image works best.
- Types of glass vary, but in general 100% speed and 100% power is a good starting spot.



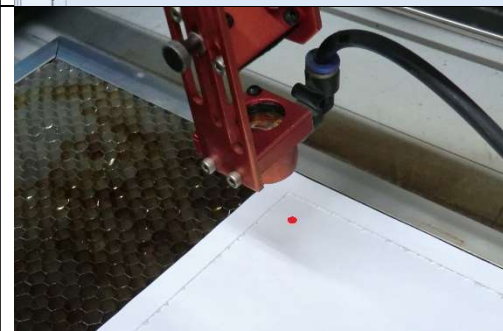
### Step 2: Invert the image

- If the image is a solid black image on a solid white background, as the example picture is, then skip this step.
- If the image is in color or greyscale, then it must be inverted to raster properly.
- To invert: from the left-hand toolbar, click on the “Invert Image” icon.



### Step 3: Insert the piece into the laser

- In order to be able to see the red positioning dot, place a sheet of white paper under the glass when you place the glass inside the laser.



### Step 4: Etch the piece

- Follow the standard steps for laser rastering

